


<b>OTS A/S</b> <i>Offshore Technical Services</i>		<b>ASSEMBLE GUIDE DAVIT</b>		Page 1 of 5
Prepared by: Kjetil Hagen	Checked by: leso	Approved by: Kjetil Hagen	Revision: 1	Date: 17.06.08

# ASSEMBLE GUIDE SAFETY DAVIT



		<b>ASSEMBLE GUIDE DAVIT</b>		Page 2 of 5
Prepared by: Kjetil Hagen	Checked by: leso	Approved by: Kjetil Hagen	Revision: 1	Date: 17.06.08

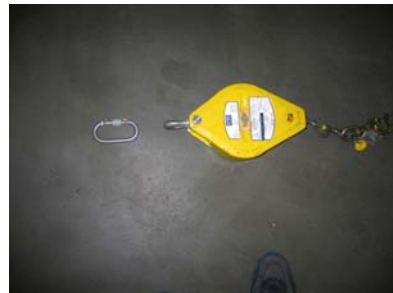
## USER REFERENCE MANUAL FOR SAFETY DAVIT

### 11.0 Check that the following content are supplied in each set.

- Davit in 2 pieces
- 2 ea mounting brackets.
- 1 ea lifting sling
- 1 ea transportation box



- 1 ea harness
- 1 ea SALA-block
- 1 ea shackle to secure block in davit
- 1 ea manual with certificates




### 11.1 Assembling

Assemble the two davit pieces together on the rig deck. The davit is secured together with a pin arm placed on the lower end of the davit.



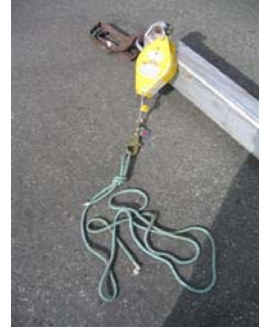
Secure the pin arm by turning it 90 dgr, and lock it with the lock pin.



		<b>ASSEMBLE GUIDE DAVIT</b>		Page 3 of 5
Prepared by: Kjetil Hagen	Checked by: leso	Approved by: Kjetil Hagen	Revision: 1	Date: 17.06.08

Fasten the SALA-block to the davit top in the pad eye using the supplied shackle. Lock the shackle with a lock pin.

Connect a rope to the hook on the SALA-block..




Fasten the soft lifting sling to top of the davit and call for the crane operator.

The davit can now be lifted and installed on to the tank.

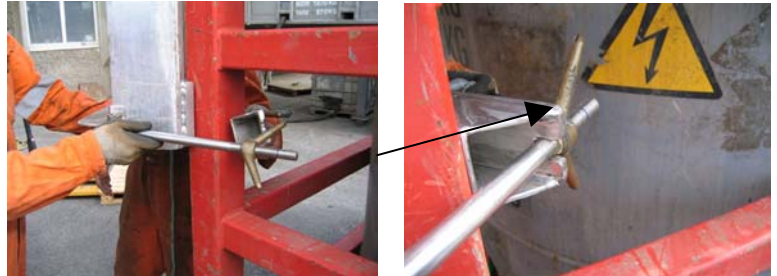


The davit is installed in one of the corners of the tank. When installing, lower the davit until the support lip reaches the top of the tank.

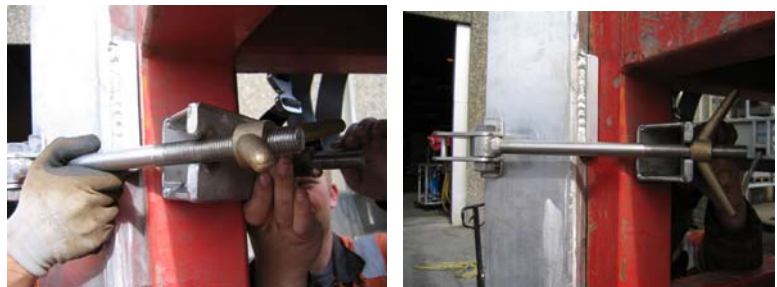


		<b>ASSEMBLE GUIDE DAVIT</b>		Page 4 of 5
Prepared by: Kjetil Hagen	Checked by: leso	Approved by: Kjetil Hagen	Revision: 1	Date: 17.06.08

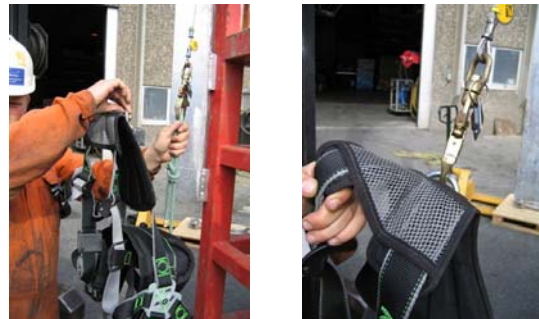
Assemble the mounting brackets as shown on the photo. Tighten the support brackets with the wing nut. Make sure the wing nut is vertical, see arrow.



Repeat the same procedure on the upper secure brackets.




Pull down the hook from the SALA-block with the rope, remove the rope and connect the harness to the hook.



Dress on and secure the harness as shown on the picture. It's important the strap is fitted and tightens up.

Now you can enter the tank and remove the lifting sling.



		<b>ASSEMBLE GUIDE DAVIT</b>		Page 5 of 5
Prepared by: Kjetil Hagen	Checked by: leso	Approved by: Kjetil Hagen	Revision: 1	Date: 17.06.08

Putt the lifting sling back to the transportation box until the equipment needs to be dissemble.

The equipment is now ready for use.

When you are going to dissassemble the equipment do it the opposite way.

**Important:**

When the job is finish please make sure that all the used equipment is placed back into the transportation boxes.



If you need further information regarding this please contact OTS AS at 51715380